

SURFACE FINISHING SPECIALISTS

AUTOMOTIVE



Far Simpler... Far Better...

ABOUT

FARÉCLA

Farécla Products Ltd is a UK, family-owned company, manufacturing surface finishing products which are used on a wide variety of substrates.

From compounds and applicators, to paint cups and microfibre cloths, Farécla has provided surface finishing solutions to automotive bodyshops, valeters, boat builders, wood workers, composite manufacturers and other industrial applications since 1952, now in over 120 countries.



QUALITY ASSURANCE

Our scientists use only the best quality raw materials. Our proprietary formulations are manufactured under tight control to deliver reliability and consistency from the first drop to the last.

LABOUR SAVING

The bespoke Engineered Abrasive Technology we use in our formulations achieves a faster cut rate which delivers a final finish requiring less time and fewer steps.

COST SAVING

Our technology achieves a better result than competitors whilst using less product, improving productivity to deliver greater value to our customers.

PERMANENT RESULTS

Our products deliver a superior and permanent high gloss finish avoiding the risk of drop back and the need for reworks.

PROFILE COMPOUNDS AND WAXES

FAR SUPERIOR TECHNOLOGY

Designed by our scientists to provide fast, permanent solutions for surface finishing. Farécla's compounds contain diminishing abrasives that do 2 jobs in 1:

PHASE 1 - Abrasive particles mechanically cut away the scratch marks left after sanding. Throughout this phase, they steadily diminish in size and roughness.

PHASE 2 - Diminished abrasives polish the surface to a deep gloss finish. (See FIG. 2).

The unique abrasive technology in Farécla products have been tailor made for Farécla in order to optimise the fine balance between cut and polish, achieving a superb, permanent finish in rapid time.



FIG. 1 - Unique Farécla abrasive powder

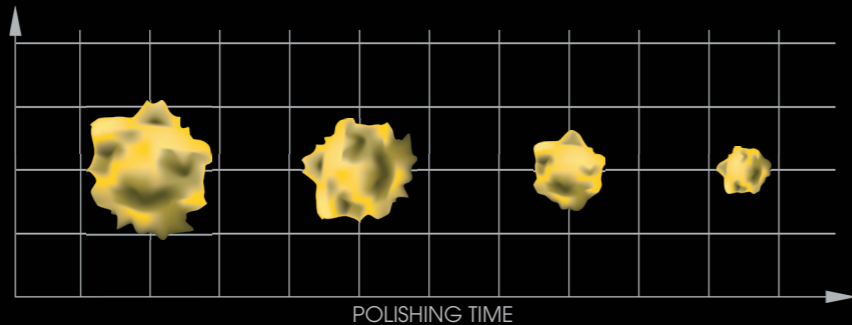


FIG. 2 - A Farécla abrasive particle diminishing graph

G MOP APPLICATORS

FAR MORE ADVANCED TECHNOLOGY

The material and design of applicator pads are essential to the performance of compounds and the results achieved on surfaces. Farécla G Mop Applicators have been engineered and tested in line with our abrasive products to deliver the best possible performance for surface rectification.

OPEN CELL STRUCTURE - For dry use products, allowing air to flow through, helping to limit the surface overheating during polishing, and provide more aggression! (See FIG. 1).

CLOSED CELL STRUCTURE - For wet use products, where water can be used to help lubrication and limit overheating. The G Mop Yellow Compounding Foams can be used with or without water.

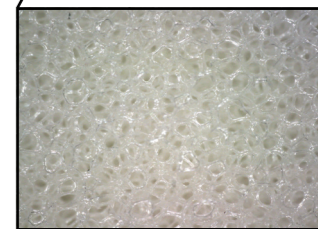
FLEXIBLE AND THIN PADS AND BACK PLATES - For riding swages and compounding evenly over the surface, especially in difficult to reach areas. (See FIG. 2).



FIG. 2 - A G Mop High Cut Foam (GMC818) and G Mop Flexible Back Plate (GMB814) compounding the difficult areas of swages.



FIG. 1 - 54x magnification of the open cell structure of a G Mop High Cut Foam (GMC618).



FAR QUICKER REFERENCE GUIDE

G3 COMPOUNDS, GLAZES & WAXES



G3 Premium Abrasive Compound

G3P506 (500g)

G3P101 (1kg) - see page 8

Cut

Gloss



G3 Extra Plus Abrasive Compound

G3E524 (500g)

G3E124 (1kg) - see page 9

Cut

Gloss



G3 Extra Abrasive Compound

G3E501 (500g)

G3E101 (1kg) - see page 10

Cut

Gloss



G3 Regular Grade Paste Compound

G3-250 (250g) **G3-1000** (1kg)

G3-400 (400g) **G3-3000** (3kg) - see page 11

Cut

Gloss



G3 Flexicut Abrasive Compound

G3F130 (1kg)

G3F130 (3kg) - see page 12

Cut

Gloss



G3 Fine Finishing Compound

G3F501 (500g) **G3F118** (1 US gallon)

G3F101 (1kg) - see page 13

Cut

Gloss



G3 Glaze Gloss Enhancer

G3G501 (500ml) **G3G118** (1 US gallon)

G3G101 (1 ltr) - see page 14

Cut

Gloss



G3 Wax Premium Liquid Protection

G3W501 (500ml) **G3W118** (1 US gallon)

G3W106 (1 ltr) - see page 15

Cut

Gloss

Cut and gloss levels may be affected by the surface type and which applicator is used

FAR QUICKER REFERENCE GUIDE

G MOP APPLICATORS



G Mop High Cut Foam

GMC618 (6" / 150mm)

GMC818 (8" / 200mm) - see page 18

Cut

Gloss



G Mop Yellow Compounding Foam

GMC312 (3" / 75mm)

GMC612 (6" / 150mm)

GMC812 (8" / 200mm) - see page 18

Cut

Gloss



G Mop Wet Use Compounding Foam

GMC606 (6" / 150mm) - see page 18

Cut

Gloss



G Mop Twisted Wool

Compounding Pad

GMW801 (single sided)

GMW806 (double sided) - see page 18

Cut

Gloss



G Mop Lambs Wool Pad

GML301 (3" / 75mm)

GML601 (6" / 150mm)

GML801 (8" / 200mm) - see page 19

Cut

Gloss



G Mop Finishing Foam

GMF301 (3" / 75mm)

GMF601 (6" / 150mm)

GMF801 (8" / 200mm) - see page 19

Cut

Gloss

Cut and gloss levels may be affected by the surface type and which compound or wax is used.

G3 COMPOUNDS & WAXES



NOTES

PERMANENT RESULTS

Farécla's Stage 1: **CUT** and Stage 2: **FINISH** compounds use diminishing abrasives, instead of fillers, to permanently remove scratches and provide a flawless finish quickly.



G3 PREMIUM ABRASIVE COMPOUND

- For use on all paint types including the very latest energy or 'hyper' clearcoats
- Long lasting powerful cut for Stage 1: **CUT** (900 - 1300rpm)
- Easy and safe to use - No dragging, staining, hazing, dusting or splatter
- Exceptionally easy and quick to wipe off
- Excellent gloss finish, especially with a G Mop Finishing Foam in Stage 2: **FINISH** (800 - 1100rpm)



Sizes	Codes	Qty
500g	G3P506	12
1kg	G3P101	6
1 US gallon	G3P124	2

FOR USE ON ALL PAINT TYPES

PERMANENT RESULTS FAST - NO FILLERS

DRY USE - NO NEED FOR WATER



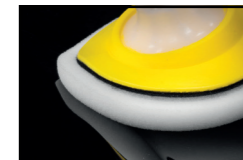
Finish sanding up to
P1500 or finer



Attach a G Mop High
Cut Foam* to a polisher.
Spur new pads.
Prime new pads
with product.



Apply a small
amount to the
surface or pad



Spread evenly and
compound at
900 - 1300rpm



Wipe away residue
with a clean, dry G Plus
Finishing Cloth
FC-3 (3 x cloths)
FC-100 (100 x cloths)

*Can also be used with a G Mop Yellow Compounding Foam
GMC312 (3" / 75mm), **GMC612** (6" / 150mm) or **GMC812** (8" / 200mm).



G3 EXTRA PLUS
ABRASIVE COMPOUND

- Excellent cutting action, even on harder paints
- Will remove P1500 or finer sanding marks leaving an excellent gloss finish
- Permanent - Contains no fillers or silicones so scratch marks will not reappear
- Minimal throw-off and wipes off easily with a Microfibre Finishing Cloth



Sizes	Codes	Qty
1 ltr	G3E124	6

IDEAL FOR USE ON MS & HS PAINTS

PERMANENT RESULTS FAST - NO FILLERS

DRY USE - NO NEED FOR WATER



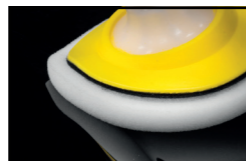
Finish sanding up to P1500 or finer



Attach a G Mop High Cut Foam* to a polisher. Spur new pads. Prime new pads with product.



Apply a small amount to the surface or pad



Spread evenly and compound at 900 - 1300rpm



Wipe away residue with a clean, dry G Plus Finishing Cloth
FC-3 (3 x cloths)
FC-100 (100 x cloths)

*Can also be used with a G Mop Yellow Compounding Foam **GMC612** (6" / 150mm) or **GMC812** (8" / 200mm).



G3 EXTRA
ABRASIVE COMPOUND

- Removes P1500 or finer sanding marks
- Restores oxidised paint work and dull surfaces
- Permanent results - No fillers
- Improved gloss performance properties
- OEM suitable - minimal splatter or dusting
- Versatile liquid - use with wool or foam



Sizes	Codes	Qty
500g	G3E501	12
1kg	G3E101	6
1 US gallon	G3E118	2

IDEAL FOR USE ON MS & HS PAINTS

PERMANENT RESULTS FAST - NO FILLERS

DRY USE - NO NEED FOR WATER



Finish sanding up to P1500 or finer



Attach a G Mop Twisted Wool Pad* to a polisher
GMW801 (single sided)
GMW806 (double sided)



Spur new pads. Prime new pads with product. Apply a small amount of product to the surface or pad.



Compound at 1500 - 1800rpm



Wipe away residue with a clean, dry G Plus Finishing Cloth
FC-3 (3 x cloths)
FC-100 (100 x cloths)

*Can also be used with a G Mop Yellow Compounding Foam **GMC312** (3" / 75mm), **GMC612** (6" / 150mm) or **GMC812** (8" / 200mm).



G3 REGULAR GRADE PASTE COMPOUND

- Reliable cut, removing P1500 or finer sanding marks quickly and easily
- High gloss system when used with G3 Fine Finishing Compound, for a enhanced gloss finish on dark colours
- Silicone-free - 100% paintshop safe
- Can be used by machine or hand



Sizes	Codes	Qty
250g	G3-250	24
400g	G3-400	12
1kg	G3-1000	12
3kg	G3-3000	4

FOR USE ON MS PAINTS

PERMANENT RESULTS FAST - NO FILLERS

BEST RESULTS WHEN LUBRICATED WITH WATER



Finish sanding up to
P1500 or finer



Attach a G Mop Wet
Use Compounding
Foam to a polisher.
Spur new pads.
Prime new pads
with product.



Spray the surface
with water.
Apply a small amount
of product to the
surface or pad.



Spread evenly and
compound at
1500 - 1800rpm.
**KEEP THE PAD AND
AREA LUBRICATED**



Wipe away residue
with a clean, dry G Plus
Finishing Cloth
FC-3 (3 x cloths)
FC-100 (100 x cloths)



G3 FLEXICUT ABRASIVE COMPOUND

- Cost effective, general purpose paste
- Removes P1500 or finer sanding marks and restores oxidised paint work and dull surfaces
- Clean in use and easily wiped on and off by hand
- Quick high gloss results
- Can be used by machine or hand



Sizes	Codes	Qty
1kg	G3F130	12
3kg	G3F301	4

FOR USE ON MS PAINTS

PERMANENT RESULTS - NO FILLERS

DRY USE



Finish sanding up to
P1500 or finer



Attach a G Mop Twisted
Wool Pad* to a polisher
GMW801
(single sided)
GMW806
(double sided)



Spray the surface
with water.
Apply a small amount
of product to the
surface or pad.



Spread evenly and
compound at
1500 - 1800rpm.
**KEEP THE PAD AND
AREA LUBRICATED**



Wipe away residue
with a clean, dry G Plus
Finishing Cloth
FC-3 (3 x cloths)
FC-100 (100 x cloths)



G3 FINE FINISHING COMPOUND

- Quickly removes P3000 or finer sanding marks
- Swirls and holograms are eliminated permanently
- Restores lightly oxidised paint work and dull surfaces
- Can be used by machine with foam as well as by hand
- Easy clean up, minimal splatter or dusting



Sizes	Codes	Qty
500ml	G3F501	12
1 ltr	G3F101	6
1 US gallon	G3F118	2

FOR USE ON ALL PAINT TYPES

CAN BE USED BY HAND OR MACHINE

ELIMINATES MINOR DEFECTS



Attach a G Mop
Finishing Foam
to a polisher

GMF301 (3" / 75mm)
GMF601 (6" / 150mm)
GMF801 (8" / 200mm)



Spur new pads.
Prime new pads
with product.

Apply a small amount of
product to the
surface or pad.



Spread evenly and
start to compound at
a slow speed (800 -
1100rpm)



Wipe away residue
with a clean, dry G Plus
Finishing Cloth
FC-3 (3 x cloths)
FC-100 (100 x cloths)



G3 GLAZE GLOSS ENHANCER

- Provides added shine quickly with no need to re-apply, saving time and money
- Hide minor swirls and holograms from all paint systems to ensure a flawless finish
- Durable and water-repellent coating that allows fresh paint to breathe



Sizes	Codes	Qty
500ml	G3G501	12
1 ltr	G3G101	6
1 US gallon	G3G118	2

FOR USE ON ALL PAINT TYPES

CAN BE USED BY HAND OR MACHINE

USE ON FRESH PAINT



Attach a G Mop
Finishing Foam*
to a polisher

GMF301 (3" / 75mm)
GMF601 (6" / 150mm)
GMF801 (8" / 200mm)



Shake well before use



Spur new pads.
Prime new pads
with product.

Apply a small amount
of product to the
surface or pad.



Spread evenly and
polish slowly -
800 - 1100rpm



Wipe away residue
with a clean, dry G Plus
Finishing Cloth
FC-3 (3 x cloths)
FC-100 (100 x cloths)



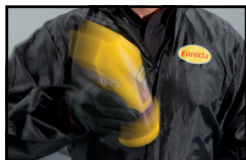
G3 WAX
PREMIUM LIQUID PROTECTION

- Provides a superior gloss finish on all types of fully cured paintwork
- Viscous formulation spreads easily providing a thick protective coating that won't dry out on the surface and buffs off quickly
- Does not dry out in use in direct sunlight so it can be applied outside
- Long lasting protection - up to 3 months



Sizes	Codes	Qty
500ml	G3W501	12
1 ltr	G3W106	6
1 US gallon	G3W118	2

- FOR USE ON ALL PAINT TYPES
- CAN BE USED BY HAND OR MACHINE
- USE ON FULLY CURED PAINT



Shake bottle well before use



Apply a small amount of product to the surface



Lightly rub in circular motions using a clean G Plus Finishing Cloth*
FC-3 (3 x cloths)
FC-100 (100 x cloths)



Allow to dry to a haze



Buff to a shine with a clean, dry G Plus Finishing Cloth
FC-3 (3 x cloths)
FC-100 (100 x cloths)

*Can be applied by machine using a G Mop Finishing Foam
GMF301 (3" / 75mm), **GMF601** (6" / 150mm) or **GMF801** (8" / 200mm) at 800 - 1100rpm.



G3 DETAILER
LIQUID SPRAY WAX

- Simply spray or wipe on and buff off for a fast clean and 'just waxed' look
- Suitable for all surfaces such as paintwork, rubber, vinyl, glass, chrome and gel coats
- Prevents the build-up of contamination that can become ingrained between washes and removes fingerprints
- Does not remove previously applied waxes



Sizes	Codes	Qty
1 US gallon	G3D118	2

- USE BY HAND
- LEAVES A HIGH GLOSS FINISH
- READY TO USE - NO NEED TO DILUTE



G Plus Spray Bottle
WSB (600ml)



G3 Detailer label for
WSB **PRM1144**



Shake and fill a G Plus Water Spray Bottle



Spray a small amount where needed



Buff to a shine with a clean, dry G Plus Finishing Cloth
FC-3 (3 x cloths)
FC-100 (100 x cloths)

G MOP APPLICATORS G PLUS ANCILLARIES



TIP

APPLICATOR MAINTENANCE

Clean applicator pads thoroughly before use to avoid contamination and prevent dried product causing damage to your surface.



G MOP HIGH CUT

FOAM

- High cut and rapid, superb gloss
- Superb handling and flexibility, glides easily over surface contours
- Open cell structure for 'dry use' compounds
- Excellent durability

GMC618 (6" / 150mm)

GMC818 (8" / 200mm)



G MOP YELLOW

COMPOUNDING FOAM

- Excellent cut and gloss
- Can be used with wet or dry use compounds

GMC312 (3" / 75mm)

GMC612 (6" / 150mm)

GMC812 (8" / 200mm)



G MOP WET USE

COMPOUNDING FOAM

- Closed cell structure for wet use compounds
- Good cut and gloss
- Excellent value

GMC606 (6" / 150mm)



G MOP TWISTED WOOL

COMPOUNDING PAD

- Twisted wool for a greater cut
- High cut
- 100% pure, 4 ply, twisted wool

GMW801 (single sided)

GMW806 (double sided)



G MOP LAMBS WOOL

PAD

- For dry use compounds
- Good cut
- Finer finish than Twisted Wool Pads



G MOP FINISHING

FOAM

- Soft, open cell structure
- Light cut
- High gloss finish



G MOP FLEXIBLE

BACK PLATE

- For all 'hook & loop' pads
- Flexible for difficult areas
- Optimise performance of the G Mop High Cut Foams and Lambs Wool Pads



G MOP BOLT ADAPTOR FOR DOUBLE SIDED PADS

- Screw fit design

GML301 (3" / 75mm)

GML601 (6" / 150mm)

GML801 (8" / 200mm)

GMF301 (3" / 75mm)

GMF601 (6" / 150mm)

GMF801 (8" / 200mm)

For 6" pads **GMB146** (14mm thread)

For 6" pads **GMB586** (5/8" thread)

For 6" pads **GMB166** (16mm thread)

For 8" pads **GMB814** (14mm thread)

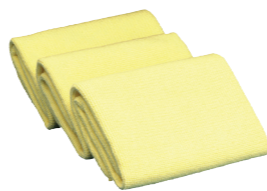
For 8" pads **GMB858** (5/8" thread)

For 8" pads **GMB816** (16mm thread)

GMA014 (14mm thread)

GMA058 (5/8" thread)

GMA016 (16mm thread)



G PLUS FINISHING CLOTH

EDGELESS MICROFIBRE

- Low-lint, 400mm x 400mm microfibre cloth
- Edgeless to avoid scratching
- Can be washed up to 100 times



G PLUS SPURRING BRUSH

FOR PAD CLEANING

- For quick and easy cleaning of pads when spun on a machine
- Avoids residue, dried compound and other contaminants impairing your next job
- Unclogs foam cells to ensure no drop in cut or gloss



G PLUS

SPRAY BOTTLE

- Gives an even dispersal
- Ensures a supply of clean water, minimises contamination
- Can be used with all sprayable liquids



G PLUS AUTOPEN

FOR JOB IDENTIFICATION

- Non staining pen for bodywork or glass
- Does not wash off in the rain, but does wipe off with a damp cloth

FC-3 (3 x cloths)

FC-100 (100 x cloths)

1090005 (for all pads)

WSB (600ml)

AP5YW24 (yellow - 5mm nib)



AC DELCO MINI POLISHER

- 75mm cordless polishing machine
- Lithium-Ion batteries life up to 45 mins
- Ideal for polishing small areas
- Includes charging unit and spare battery

FG-MINIPOL/1
AC Delco Mini Polisher Brushes
MCB001
AC Delco Mini Polisher Battery
MBA001
AC Delco Mini Polisher Back Plate
MBP701



RUPES ROTARY INDUSTRIAL POLISHER

- Lightweight (1.9kg) yet powerful
- For use with all G Mop Applicators
- Soft start with electronic speed control (700 - 1850rpm)

FG-18EN

G3 PREMIUM MINI POLISHER KIT

- Ideal for small areas such as door mirrors, trims, headlights and spot repairs

KTP001



KIT CONTAINS

- G3 Premium Abrasive Compound 500g (1 bottle)
- G3 Glaze Gloss Enhancer 500ml (1 bottle)
- G Mop 3" Yellow Compounding Foams (2 pads)
- G Mop 3" Finishing Foams (2 pads)
- G Plus Spurring Brush (1 brush)
- G Plus Finishing Cloth (1 cloth)
- AC Delco Mini Polisher (1 machine, 2 batteries)

G3P506
G3G501
GMC312
GMF301
1090005
FC
FG-MINIPOL/1

FARÉCLA OPS SPRAY CUP SYSTEM



NOTE

MINIMISE WASTAGE

The Farécla OPS Flexible Paint Cups are designed to collapse down during use, minimising waste disposal. However, these cups are still re-fillable!



FARÉCLA OPS

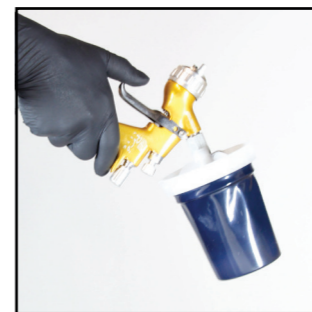
FLEXIBLE PAINT CUPS & RIGID CLEAR CUPS

OPTIMISED 2-PIECE PAINT SYSTEM

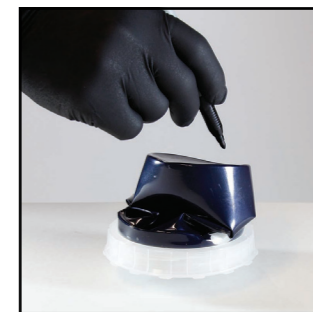
A patented innovative product for the preparation and application of both solvent and water based paints. Robust 2-piece design allows paint mixing directly in the cup, quick assembly, easy re-filling if required and compact disposal - guaranteeing a cost effective job.



Robust, 2-piece, closed system ensures no leakage



Closed system allows for inverted spraying



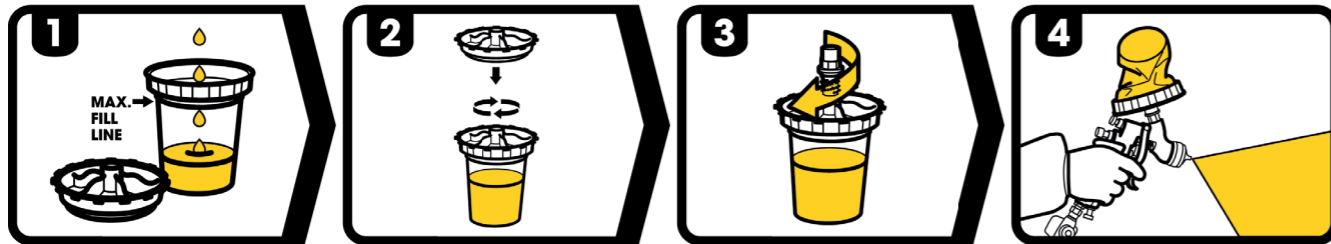
Inverted storage prevents filter drying out



Cup collapses to minimise waste

Key Features & Benefits

- Only 2 pieces (instead of up to 4) - Simple and quick
- No outer cup required - Visibility of the paint remaining in the cup is increased
- Robust gun to cup connection and closed cup system - no chance of breaking or leaks and allows for inverted spraying in hard to reach areas
- Calibrated and Blank Rigid Clear Cups are available - Facilitates "over the scales" accuracy and traceability of mixes
- Rigid cup stays in mixing area - Eliminates risk of contamination in spray booth
- Disposable system - Time saved on cleaning and cost savings on solvents

USE**STORE**
FARÉCLA OPS
PRODUCT CODES


Product	Size	Code	Qty.
Farécla OPS Flexible Paint Cup			
- 125 micron filter	300ml	PSC301	45
- 190 micron filter	300ml	PSC306	45
- 125 micron filter	600ml	PSC601	45
- 190 micron filter	600ml	PSC606	45
Farécla OPS Rigid Clear Cup			
- Printed	650ml	PSM601	200
- Blank	650ml	PSM606	200
Farécla OPS Stoppers	For all OPS cups	PSS001	100

Gun Make	Gun Model	Adaptor
Aerometal	-	B
Aircraft	-	H
Air GUNSA	AR3, AZ3-HTE, AZ30-HTE	B
Air GUNSA	AZ4 Serial 75 (primer)	D
Bernardo Eccenaro	-	A
DeVilbiss	Guns with gauges	R
DeVilbiss	SRI (SMART repairs)	T
DeVilbiss	All other models	C
Eminent	E13, AZ3 HVLP, AZ3 HET	B
Iwata	Supernova WS 400	B
Iwata	LPH 80 (SMART repair)	S
Iwata	All other models	A
Kremlin	M21G	E
Max-Air	-	A
Pro-Tek	-	A
Sagola	-	F
Sagola	4400 Xtreme	L
Sagola	Lux	B
Sagola	Mini	F/G
SATA	Mini	G
SATA	NR 92 HVLP, Jet B GR, Jet GR 92 B, Jet B, Jet B NR 95 HVLP, Jet B NR 92	A
SATA	KLC (HVLP/RP/P), MCB family, Jet RP, Jet RP Digital	E
SATA	Jet 2000	QE
SATA	Jet 2000 HVLP, LM 2000 B, NR 2000 Digital	E
SATA	Jet 3000, 4000 & 5000	QE
SATA	Jet 90/S	E
Walcom	GEO F/X 97, FX HVLP, Slim	D
Walcom	Genesi	E

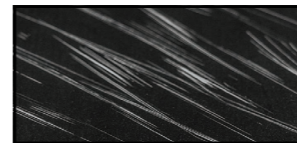
AUTOMOTIVE SURFACE DEFECT SOLUTIONS

A VARIETY OF DEFECTS

Farécla products are crucial in the rectification of bodywork surfaces, from:

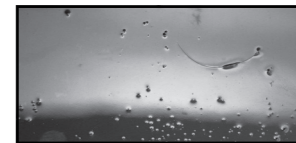
- Spraying with Farécla's OPS paint cups system
- Compounding out sanding marks with Stage 1: **CUT** compounds
- Removing light defects with Stage 2: **FINISH** compounds
- Producing an extra level of shine and protection to work produced with Stage 3: **PROTECT** products.

To the right are just some of many defects that Farécla's products can remove **PERMANENTLY!**



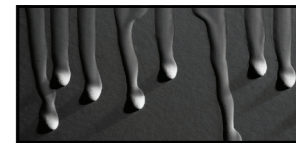
SCRATCHES

Heavy and lighter scratches may have to be sanded down before being compounded out. Deep scratches will need to be resprayed with Farécla OPS.



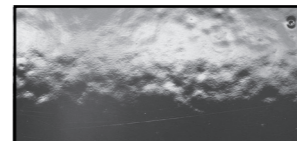
DUST NIBS

Dust nibs, caused by dirt and dust settling in the primer or colour before drying, would need sanding back before compounding.



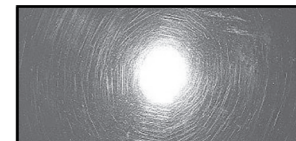
RUNS

Caused by excessively sprayed material in areas of the surface. Remove with blading and/or sanding, followed by compounding.



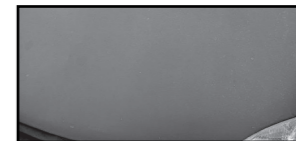
ORANGE PEEL

Caused when paint dries before it spreads into a smooth layer. Remove by sanding, followed by compounding.



HOLOGRAMS & SWRL MARKS

These are light scratches / etching in the top layer of paint which refract light preventing a clear, mirror finish. Polish out with light Stage 2: **FINISH** compounds.

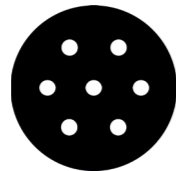


DULLING OR FADING

Caused by micro-scratches in the clear coat making a cloudy appearance. Polish out with light Stage 2: **FINISH** compounds.

FAR QUICKER REFERENCE GUIDE

WHEN TO USE



THE MINIMUM
SANDING GRIT



SEE PRODUCT PAGE FOR THE
APPROPRIATE APPLICATOR



SEE PRODUCT PAGE FOR THE
APPROPRIATE APPLICATOR



USE WITH A G MOP FINISHING
FOAM OR G PLUS FINISHING CLOTH

MEDIUM SOLIDS PAINTS

P1200



G3 Premium
G3 Extra Plus
G3 Extra
G3 Regular Grade
G3 Flexicut



G3 Fine
G3 Premium



G3 Glaze
G3 Wax

HIGH SOLIDS PAINTS

P1500



G3 Premium
G3 Extra Plus



G3 Fine
G3 Premium



G3 Glaze
G3 Wax

ULTRA HIGH SOLIDS PAINTS +

P1500



G3 Premium



G3 Premium
G3 Fine



G3 Glaze
G3 Wax



Farécla Products Limited,

Broadmeads, Ware,
Hertfordshire, SG12 9HS
England

Tel: +44 (0) 1920 465041

Fax: +44 (0) 1920 466557

E-Mail: enquiries@farecla.com

www.farecla.com



[fareclaproductsltd](https://www.facebook.com/fareclaproductsltd)